



Test Print Page

It is important that you configure your printer correctly to get an accurate reproduction of the page when printing. This is usually easy, but the process depends on the software you use for printing. In general, when printing, choose the paper size A4 or letter paper, and disable any kind of scaling, as scaling would change the size of your printed file.

How to Verify

Print the test page only to verify that your settings are correct. The test page has a ruler in centimeters and inches. Measure the ruler on the test page with your ruler at home. Your printer is set up correctly if the two rulers line up. If this is true, you're all set! You can go ahead and print out patterns. Print your pattern(s) just like you did with the test page.

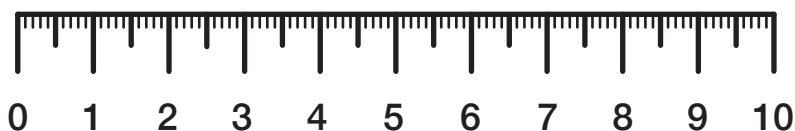
Help

Do you have any issues with printing? Do not worry, we are here to help. Send us an email to Asktailorbirgit@patternadventure.com about your concern and we will get back to you.

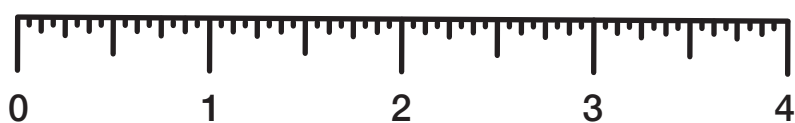


Your pattern comes as a PDF file which can be printed out on A4 or letter size paper. The first page is a test print page with a ruler in centimeters and inches. First, print this test page to make sure that the settings of your printer are correct. Then print your pattern.

cm



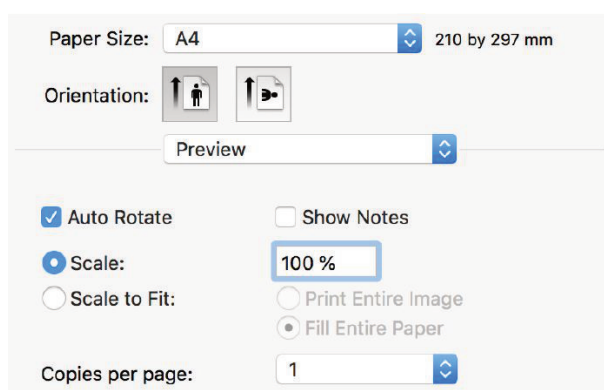
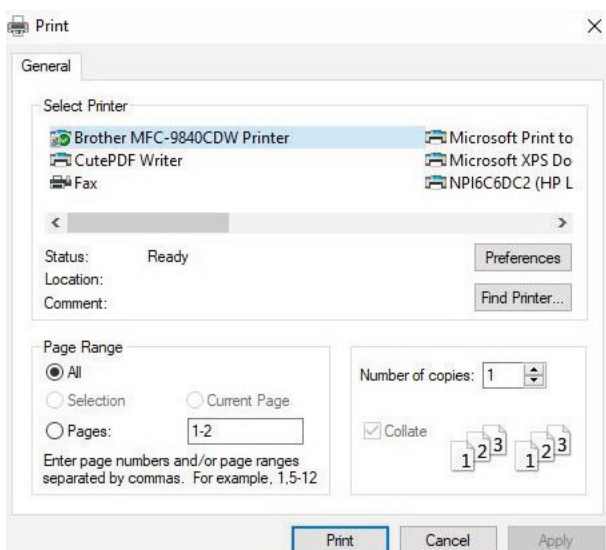
inch



How to Print

Windows

Open the PDF file in Adobe Acrobat, Reader¹ or a compatible PDF reader software. To print, go to **FILE PRINT** or press **CTRL + P**. A printer dialog should come up. Select the printer you like to use. Make sure that the fit to page option is set to **OFF** and the scaling factor is to **100%**.



MacOS

On macOS, use the built-in Preview app to open the PDF by double clicking on it. To print, go to **FILE PRINT** or press **CMD + P**. A printer dialog box should come up. Set the scale factor to **100%**. Do not use the scale to fit option, as it will as it will change the size of your printed file.

¹See <https://get.adobe.com/reader>